

# AMC 1000 SC<sup>TM</sup>

A high flow, solids control solution for HDD, mud rotary, diamond drilling and chip-core operations.



The AMC 1000 SC<sup>TM</sup> provides an innovative alternative to fluid sumps, offering solids control to optimise drilling fluid and drilling efficiency. The unit processes solids up to 260gpm / 1000Lpm, and incorporates high flow shakers suitable for HDD, mud rotary, diamond drilling and chip-core operations (up to 12 ¼" diameter for top hole drilling).

## Improving Efficiency & Productivity

The three panel shaker provides pre-screening of the high volume mud flows before the fluids are pumped to the centrifuge. The unit's high-speed Alfa Laval CDN X 200 decanting centrifuge operates with a g-force up to 3000g to remove solids to less than 5 microns and keep drilling fluid in excellent rheological condition.

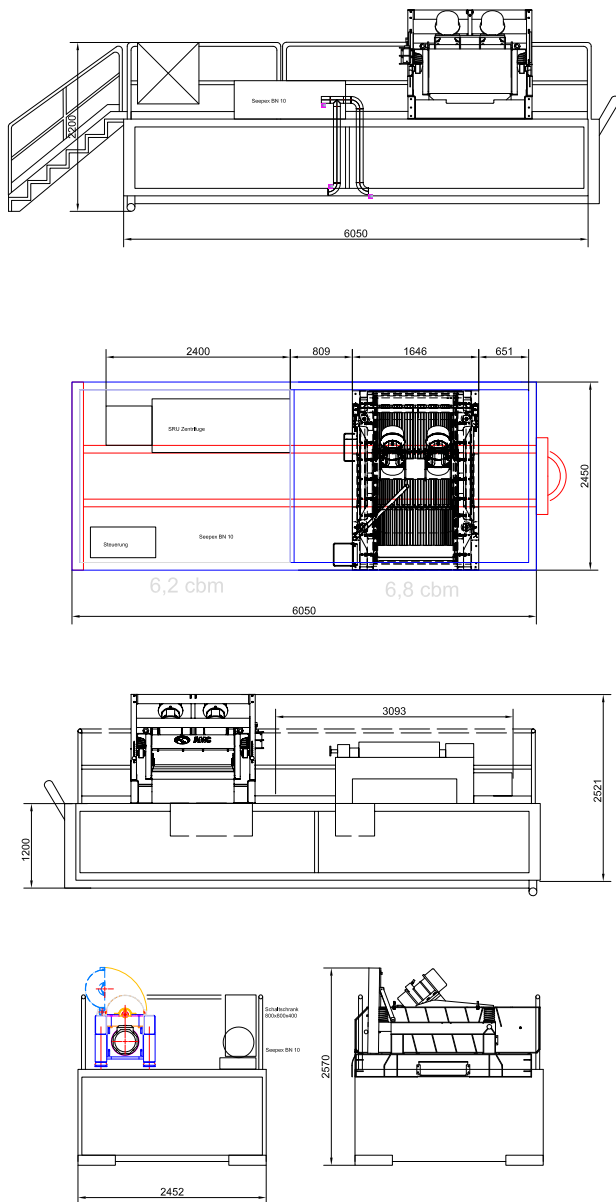
By maintaining clean, non-abrasive mud, the AMC 1000 SC<sup>TM</sup> is able to reduce mud and water consumption, the occurrence of stuck pipe, wear-and-tear on drilling components, overall downtime, and allow personnel to focus on the drilling operations, rather than monitoring and mixing mud.

## How Does It Work?

Drilling fluid is circulated directly from the drill collar to the solids control unit shaker and centrifuge, where drill solids are removed. Cleaned drilling fluids are then returned to the drill rig for reuse. The highly mobile unit also incorporates a mixing chamber and weir system, which enables drilling fluids to be added accurately and efficiently.

## Key Benefits

- Removes low gravity solids for greater drilling efficiency
- Reduces water, mud, cartage and mud disposal costs
- Eliminates the cost of digging sumps
- Reduces site footprint, site re-mediation and environmental management costs
- Reduces wear and tear on drill components
- Improves on-site health and safety, reducing slips and hazards due to mess, mud and water
- Easy to transport "single unit" equipment package.



## TECHNICAL SPECIFICATIONS

### WEIGHTS AND DIMENSIONS

DIMENSIONS	SIZE
Length	6,050mm (19.8ft)
Width	2,450mm (8ft)
Height	2,415mm (7.9ft)
Weight	5,500kg (12,125lbs)

### UNIT SPECIFICATION

ITEM	DESCRIPTION
Centrifuge	Alfa laval lynx 200. 280mm (11") bowl diameter / 980mm (38.6") length
Centrifuge feed volume	30 – 250L / min
Transfer motor	7.5kW
Feed pump	Seepex BN17 - 6L
Transfer pump	Submersible pump Xylem 1.7kW
Tank volume	11.5m <sup>3</sup>
Process flows	Up to 260gp / 1000Lpm
Screen	Pre-tensioned metal frame 1067mm x 737mm (42" x 29")
Solids volume	Max: ca. 25kg (55.1lbs) / min (Light mud)
Shaker	Three panel linear-motion type AMC 813_3p
Power supply	400V 50Hz 36kW 45kVA

## Further Information

For more information please go to our website [www.amcmud.com](http://www.amcmud.com) or contact your nearest AMC office.

Manufactured under a quality system certified as complying with ISO 9001 by an accredited certification body. Results may vary due to fluid properties and solids contents, please consult your nearest AMC technical specialist to achieve optimum performance.

### ASIA PACIFIC

Perth, Australia (Head Office)

T +61 8 9445 4000

E [amc@imdexlimited.com](mailto:amc@imdexlimited.com)

Indonesia

T +62 (0) 21 759 11244

### AFRICA

South Africa

T +27 (11) 908 5595

### EUROPE

Germany

T +49 4402 6950-0

United Kingdom

T +44 (0) 1273 405 975

### SOUTH AMERICA

Argentina

T +54 (9) 261 426 1116

Brazil

T +55 (47) 3404 5920

Chile

T +56 (2) 2589 9300

Peru

T +51 (1) 322 8850

### NORTH AMERICA

USA / Canada

T +801-364-0233

Mexico

T +52 (871) 169 2095